

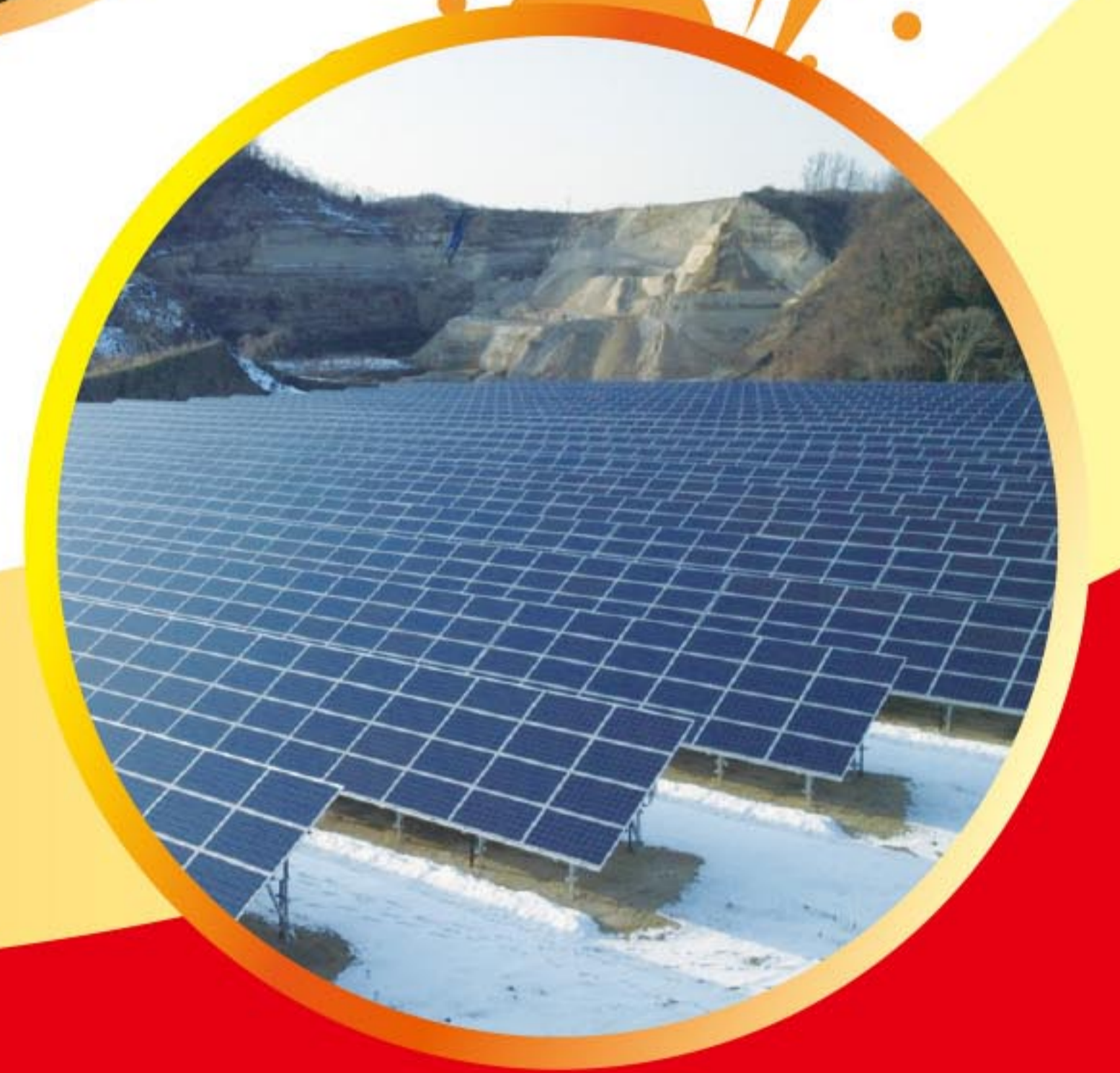


www.gtectw.com

Your Way to Sustainability

GINTUNG

同昱能源科技股份有限公司
Gintung Energy Corporation



GTEC-270G6S6A~GTEC-290G6S6A

Electrical Characteristics

Identical Specification to Commodity ASEC-270G6S6A~ ASEC-290G6S6A

Maximum Power (Pmax)	270wp	275wp	280wp	285wp	290wp
Maximum Power Voltage (Vmpp) [V]	30.20	30.35	30.50	30.68	30.92
Maximum Power Current (Impp) [A]	8.94	9.06	9.18	9.29	9.38
Open Circuit Voltage (Voc) [V]	37.59	37.83	38.08	38.32	38.51
Short Circuit Current (Isc) [A]	9.34	9.44	9.55	9.66	9.78
Module efficiency [%]	16.87%	17.18%	17.49%	17.81%	18.12%
Temperature coefficient of P max [%/K]	-0.4684	-0.4684	-0.4684	-0.4684	-0.4684
Temperature coefficient of Voc [%/K]	-0.3397	-0.3397	-0.3397	-0.3397	-0.3397
Temperature coefficient of I sc [%/K]	0.0423	0.0423	0.0423	0.0423	0.0423
Series Fuse [A]	12	12	12	12	12
Maximum System Voltage [V dc]	1000	1000	1000	1000	1000
NOCT	45.8°C	45.8°C	45.8°C	45.8°C	45.8°C

※ Measured at Standard Test Condition (STC): Irradiance of 1000W/m², AM 1.5, and Cell Temperature 25°C

※ Normal Operating Cell Temperature (NOCT): Irradiance of 800W/m², Temperature 20° C, Wind Speed 1m/s

Mechanical Characteristics

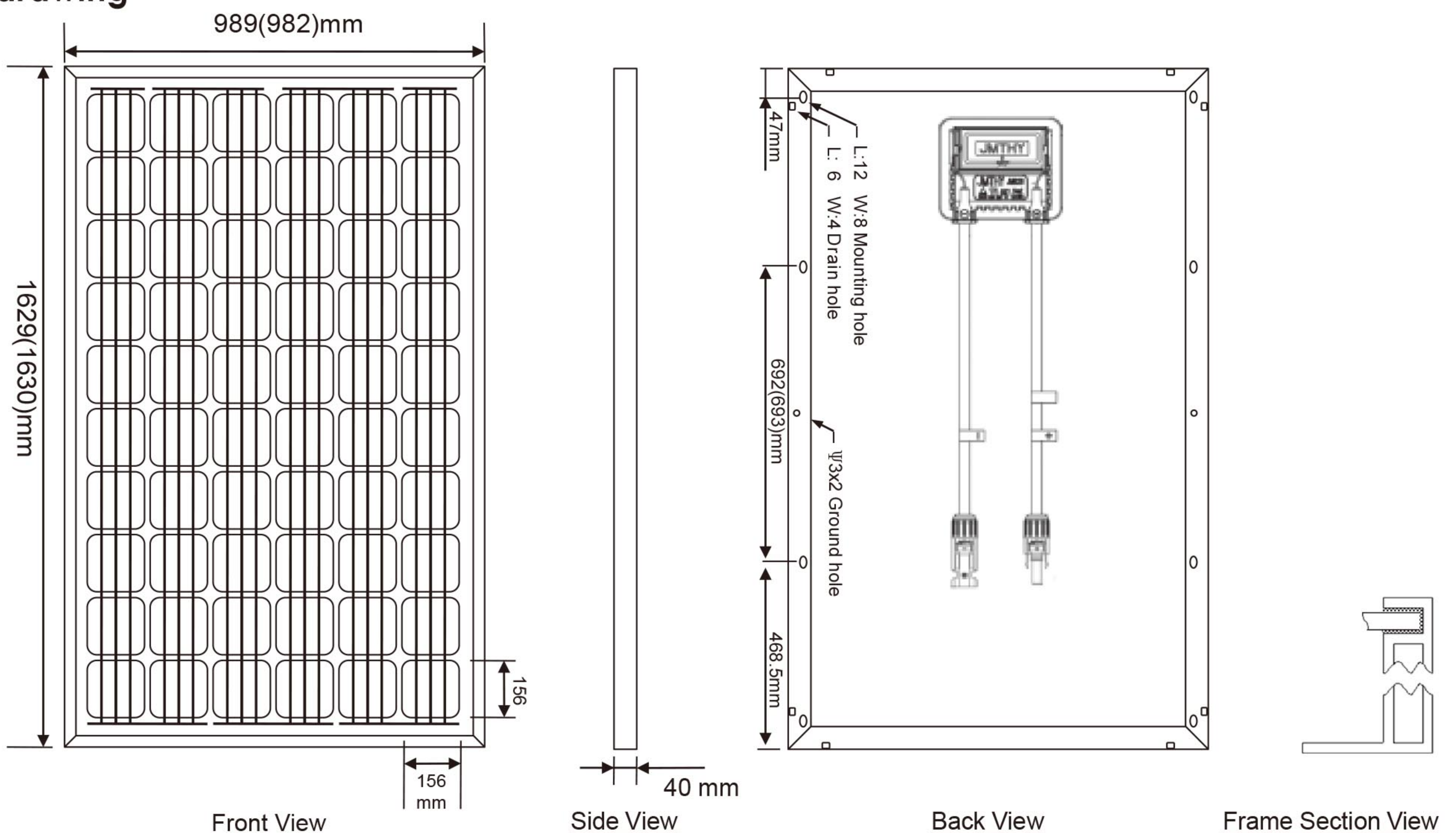
Cell Configuration	60 in series
Cable Length (mm)	1000
Dimension (mm)	1629 x 989 x 40 1630 x 982 x 40
Weight (kg)	19.0
Backsheet Color	White / Black
Frame Color	Silver / Black

Color of backsheet and frame can be customized.

Qualification Test Conditions

Temperature Cycling Range	-40°C to +85°C
Static Load	5400Pa
Hailstone Impact	25mm hail at 23m/s

Technical drawing



Note: Design and specifications are subject to change without notice.
This document is the exclusive property of GINTUNG and shall not be reproduced or copied or transformed to any other format without prior permission of GINTUNG.



GINTUNG

W www.gtectw.com

E sales@gtectw.com

Guanyin Plant

No.98, Ronggong S. Rd., Guanyin Township,
Taoyuan County 328, Taiwan (R.O.C.)

T+886-3-4160222

F+886-3-4160240

Longtan Plant

No.65-11, Jiuzuoliao, Wuhan Village,
Longtan Township, Taoyuan County 325,
Taiwan (R.O.C.)

T+886-3-4798538

F+886-3-4707427

