

Home-Secure

Support 30 numbers wireless sensors

Solemn Declaration :

1. Wireless RF technology is adopted; the strength of signal depends on the environment.
2. Main device maybe work incorrectly, due to electromagnetic interference or premeditated violence.
3. We are not responsible for the damage of burglary or accident because this product is auxiliary machinery for safety.

1. Package includes :

1.1 Standard :

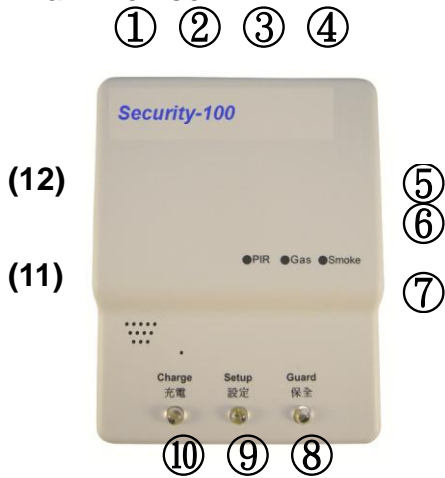
- (1) One main unit (black, white)
- (2) One adapter
- (3) One remote controller
- (4) One wireless P.I.R motion detector
- (5) One telephone line

1.2 Option :

- (1) Remote controller
- (2) Alarm (Siren)
- (3) Wireless P.I.R motion detector
- (4) Wireless smoke alarm
- (5) Wireless gas detector

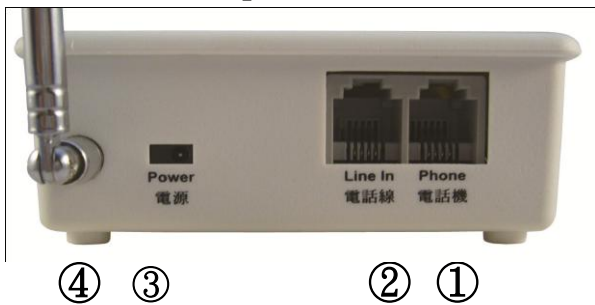
2. Outward introduction

2.1 Main Device

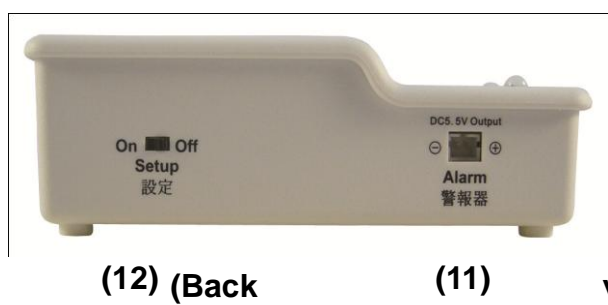


1	Home Phone	7	Reset
2	Line In	8	Guard
3	Power	9	Setup indicator LED
4	Antenna	10	Charge Indicator LED
5	Pair Bottom	11	Alarm (Option)
6	Remote Controller Indicator LED	12	Setup Switch

(Top view)



Lateral view 1



Lateral view 2



2.2 Remote controller



How to pair : Press the pair bottom (5) then the red light (6) will turn on, and release bottom after 1 second, the red light (6) will turn off. Press any bottom of remote controller in the interval of 30 Seconds, the pair will be done.

Power : 27A/12V

2.3 Wireless P.I.R

motion detector

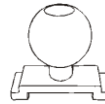


(On)
Switch →
(Off)



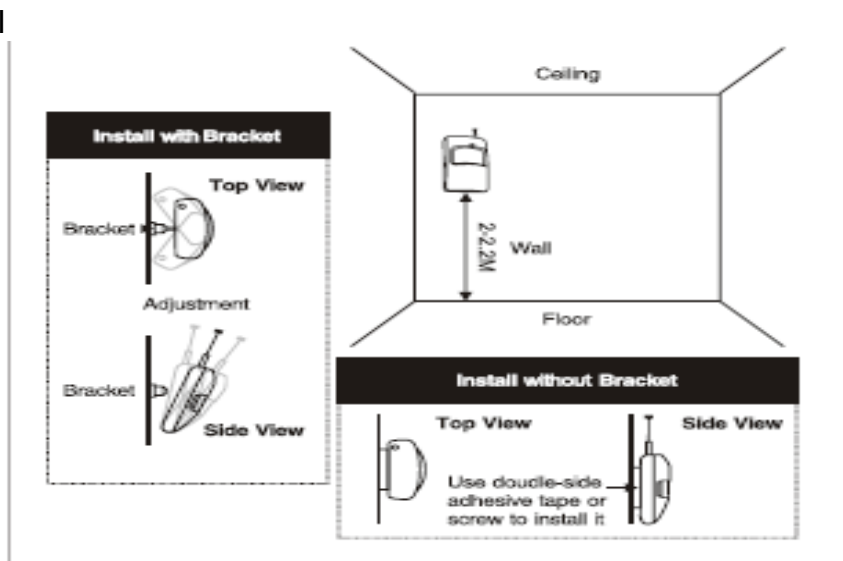
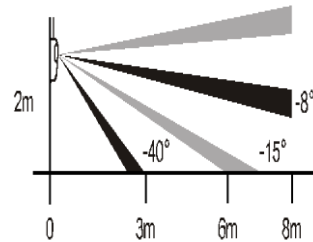
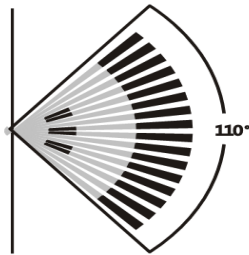
← Detector led (Green)

Bracket



How to pair: Step1: Turn off the P.I.R motion detector.
Step2: Press the pair bottom (5) then the red light (6) will turn on, and release bottom after 1 second, the red light (6) will turn off.
Step3: Turn on the P.I.R motion detector, and the pair will be done.

Detection Scope Diagram:



- ⊙ Green light indicates that intruder has entered the diction zone and the detector is sending alarm single to the main device.
- ⊙ Power : 9V/6F22
- ⊙ Red light means that the detector battery is running out. You should replace

the battery as soon as possible; otherwise the detector could not work as normal.

2.4 Smoke Alarm (Option)

Introduction : Photoelectric Smoke Detector runs by detecting the smoke particles.



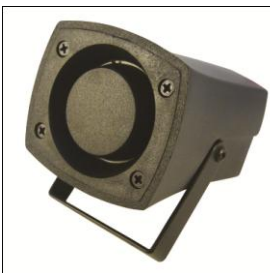
2.5 Gas Detector (Option)



Introduction : This is high-stability combustible gas detector, which is used for detecting the leakage of combustible gases.

The product is applicable to residential areas, buildings, villas, hotels, apartments and any places where the combustible gas exists.

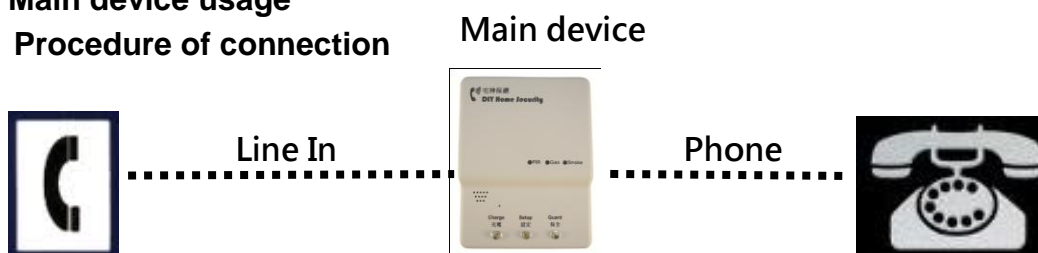
2.6 Alarm (Siren)



Introduction : When triggered, the main device will enable the siren, browbeating the intruder.

3. Main device usage

3.1 Procedure of connection



3.2 Setup main device : section 2.1 for reference

- (1) Adapter Plug into DC jack, ③ then red light on, blue light blanking.
- (2) Phone line plug into the socket ②. (An extension or digital phone is not suitable for the device)
- (3) Home phone line plug into socket ①.
- (4) Step1: Turn on the switch (12).
Step2: All parameters including pre-numbers, code can be setup through home phone. **Section 3.3 for detail**
Step3: After finished the setup, sliding the switch to the position of off.
- (5) Turn on all sensors.

- (6) Press big red bottom of remote controller, armed the main device.
- (7) Press big gray bottom of remote controller, disarmed the main device.

3.3 Setup pre-numbers (support 4 user phone numbers, which dialed while device alarming)

Control code	Phone number	End code
* 01 #	XXXXXXXXXXXXXXXX	#
* 02 #	xx	
* 03#		
* 04 #		
Green light on	Green light off	Green light on & beeper utter a sound

How to set up the first user phone number:

- (1) Sliding the setup switch **(12)** to the position of on and then the green light will on.
- (2) **Hang on** home phone, key in * 01 # green light off, and then key in the user phone numbers(Max 16 digits).
- (3) After complete(2), Key in the # green light on and beeper utter a sound.
- (4) Setting other user phones number, the procedures are the same.
- (5) When finished, sliding the setup switch **(12)** to the position of off and then the green light will off, remember to **hang up** the home phone.

3.4 Erase pre-numbers:

How to erase the first user phone numbers:

- (1) Sliding the setup switch **(12)** to the position of on and then the green light will on.
- (2) **Hang on** home phone, key in * 01 # # green light off, then green light on and beeper utter a sound.
- (3) Erasing other user phones number, the procedures are the same.
- (4) When finished, sliding the setup switch **(12)** to the position of off and then the green light will off, remember to **hang up** the home phone.

3.5 Set/Erase the secret code: (When dialing the device, user keys in the secret code correctly and then user can arm/disarm the device)

Set Code:

- (1) Sliding the setup switch **(12)** to the position of on and then the green light will on.
- (2) **Hang on** home phone, key in * 00 # green light off, and then key in the secret code (Max 16 digits).
- (3) After complete(2), Key in the # green light on and beeper utter a sound.

(4) When finished, sliding the setup switch **(12)** to the position of off and then the green light will off, remember to **hang up** the home phone.

Erase Code:

(1) Sliding the setup switch **(12)** to the position of on and then the green light will on.

(2) **Hang on** home phone, key in * 00 # # green light off, then green light on and beeper utter a sound.

(3) When finished, sliding the setup switch **(12)** to the position of off and then the green light will off, remember to **hang up** the home phone.

3.6 Arm/Disarm the main device:

(1) Arm: Press big red bottom of remote controller then blue light is solid and beeper sounds once.

(2) Disarm: Press big gray bottom of remote controller then blue light is flashing and beeper sounds twice.

3.7 While alarming, enable or disable the beeper (Default: enable)

(1) Enable: Press bell bottom of remote controller then beeper sounds once long.

(2) Disable: Press bell bottom of remote controller then beeper sounds twice long.

(3) The procedure of enable/disable beeper is circle.

3.8 While alarming, device dial pre-numbers if user got the phone call please press the # key or 0 key.

(1) While alarming, the beeper sounds continuously. (If disable the beeper, the beeper will be silent).

(2) While alarming, device dial pre-numbers if user got the phone call please press the # key or 0 key.

Support 2 modes:

Mode1: Press # : Notify user and hang up after 30 seconds.

Mode2: Press 0 : Notify user and turn off the beeper, and user can listen to the sound of zone immediately, hanging up after 3 minutes.

(3) Whatever user presses # key or 0 key, which action will show the device, stopped dialing.

(4) After user presses # key or 0 key, user can press 1 key (after 4 seconds user will hear two sounds that beeper makes) to disarm the device.

(5) If user does not answer the call, the device will dial four pre-numbers by turns, and keep 3 circles, until user answer the call and presses # key or 0 key.

(6) After 3 circles are completed, the device stops dialing unless device is triggered again.

3.9 Dialing the device, user can arm/disarm the device:

(1) Long distance arm/disarm the device :

i. User dials device, after 10 ringers, the device will answer the call automatically (If user doesn't set the secret code, then device doesn't answer automatically).

ii. After device answers the call, keying in the secret code, (**EX. Code is**

1234, Key in 1234#), if secret code is correct, please key the secret code again.

(2) After device answer the call, pressing **1** key, then the device will in the circle of arm/disarm device, according to the beeper sound to judge the status of device.

Arm: beeper sounds once.

Disarm: beeper sounds twice.

(3) After device answer the call, pressing **2** key, then the device will in the circle of enable/disable beeper, according to the beeper sound to judge the status of device.

Enable: beeper sounds once long.

Disable: beeper sounds twice long.

Ps. Above-mentioned action should be completed in the interval of 30 seconds.

4. Delete sensors or remote controller. (Support 30 numbers wireless sensors)

If user wants to erase all sensors which had paired before,.

i. Pressing the pair bottom **⑤**.

ii. Waiting for remote controller Indicator LED **⑥** is off.

iii. Erasing is completed.

5. Equip extern siren:

Plugging the siren into the socket of Alarm **(11)**, while alarming, siren will make loud noise to browbeat the intruder.

6. Backup battery

(1) Backup battery working hours: More than 5 hours.

(2) When intruder cut the power off, device still can dial pre-numbers.

7. The procedure while gas-detector and smoke-alarm are triggered.

(1) Arm the device, while gas-detector and smoke-alarm are triggered.

(2) Device will dial pre-numbers immediately.

(3) User answer the call, pressing **#** key or **0** key, after 4 seconds user hears 10 short sounds that beeper makes.

8. Trouble shooting:

(1) Reset: If device works incorrectly, pressing the reset bottom **⑦**.

(2) When plugging in the adapter, Guard LED **⑨** doesn't work, meaning battery is bad.

(3) Forgetting the secret code please reset the secret code according to section 3.5.

(4) Sensors or remote controller doesn't work correctly. Please check the battery.

(5) If user can not setup pre-numbers, checking the connection of section 3.1.

(6) All sensors which need to replace the battery; user needs to check the battery every 3 months to ensure that sensors work correctly.