



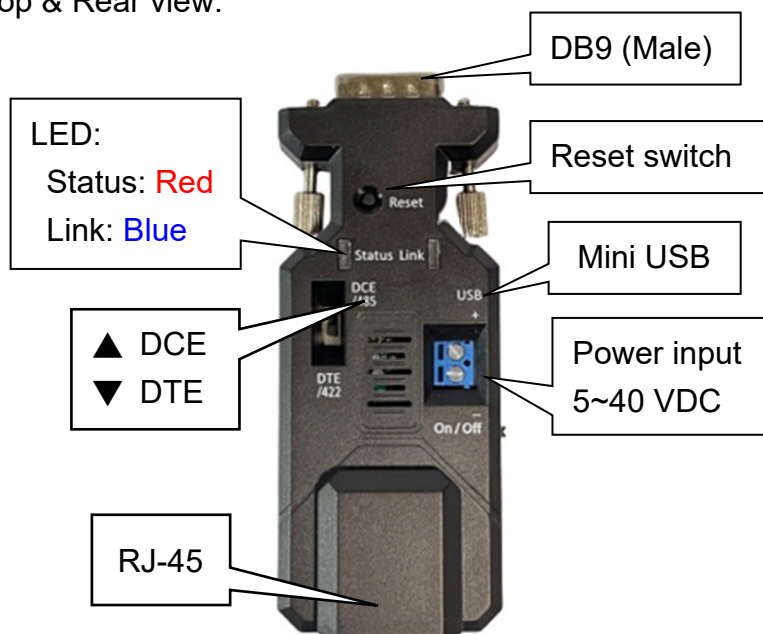
# Ethernet to RS-232 adapter user manual

Model: S2E232V2

<p>Ethernet to RS-232 adapter</p>  <p>White Box Dimension: 11 x 6 x 5 (cm) Total Package Weight: 126 g</p>	<p>Package Contents:</p> <ul style="list-style-type: none"><li>● Ethernet RS-232 adapter x 1</li><li>● A4 User manual x 1</li><li>● USB Cable x 1</li></ul> 
---	--

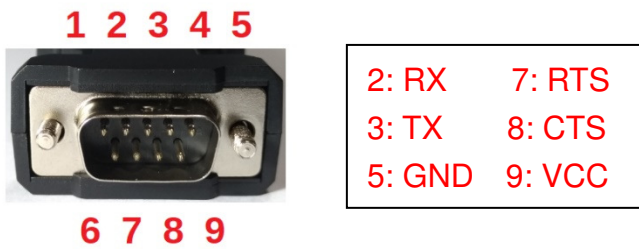
## 1. Product profile: Male type of DB9 connector

### 1.1 Top & Rear view:



Remark: The DCE/DTE will swap the TX/RX or CTS/RTS.

## 1.2 DB9 connector: Male



Pin	Signal	DTE Direction	DCE Direction	Description
1	N/A			
2	RxD	Output	Input	Transmitted data
3	TxD	Input	Output	Received data
4	N/A			
5	GND			Ground
6	N/A			
7	RTS	Input	Output	Clear to send
8	CTS	Output	Input	Request to send (Default)
9	VCC			Power Input (5~40 VDC)

## 2. Start to use the adapter

2.1 2.2 There're three power inputs, mini USB, pin9 of DB9 or blue 2 ports block terminal. Please select one way to power the adapter. The max. voltage is 40 VDC input for all sources.

2.2 COM port default setting:

- Baud rate: 9,600 bps
- Data bit: 8
- Parity: none
- Stop bit: 1
- Flow control: none

2.3 Network default setting:

- IP: 192.168.0.3
- Socket port: 5000 (TCP server)
- Log in ID: admin
- Log in password: admin

2.4 DCE/DTE switch: DCE side. The switch will swap TX,RX,CTS,RTS of the COM port.

Generally, DCE side for PC or NB setup. The user will test and switch to the correct side for the remote device.

2.5 LED indicator on RJ45 connector:

Green: Link, when ethernet physical link established, on.

Yellow: Data, when ethernet data communicate, toggle

2.6 LED indicator on the adapter:

Red: Solid on when power on the adapter

Blue: Flash when data input or output

2.7 Power supply

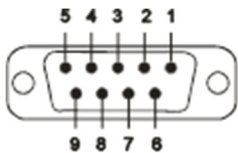
2.7.1 Voltage: 5~40 VDC, **Don't exceed the limit.**

2.7.2 There're 3 ways to power the adapter: Mini USB, 2P Terminal Block and pin9 of DB9, please choose one. **Don't power the adapter by more than one source.**

2.7.3 The mini USB cable is inside the standard package.

2.8 Network setting: The adapter will be connected with the PC or NB directly w/o the hub or router. Please set the local IP address as the same network segment of the default Ethernet to serial converter. The IP address mustn't be the same for both sides.

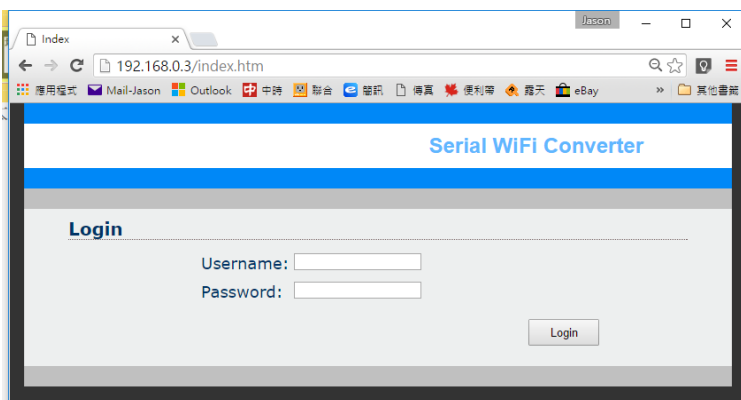
### 3. RS232 Interface (Male)



Pin	Signal	DTE Direction	DCE Direction	Description
1	N/A			
2	TxD	Output	Input	Transmitted data
3	RxD	Input	Output	Received data
4	N/A			
5	GND			Ground
6	N/A			
7	CTS	Input	Output	Clear to send
8	RTS	Output	Input	Request to send (Default)
9	VCC			Power Input (5~27 VDC)

### 4. Configuration:

4.1 Web page: Execute the browser and type the default IP address, 192.168.0.3 and log in ID: admin, log in password: admin.



Setup page: Save every page setting and apply to take effective. The adapter will reboot after press the apply button.

The screenshot shows the 'Serial WiFi Converter' web interface. It has a navigation bar with 'Basic', 'Advanced', 'WiFi', and 'WiFi Wizard' tabs, and a 'Logout' link. The 'Basic' tab is active, showing two sections: 'Serial Settings' and 'Serial to Network Settings'.

**Serial Settings:**

- Device Name: DSM1 (Note: Device name can be up to 16 characters.)
- Data Baud Rate: 9600
- Data Bits: 8
- Data Parity: None
- Stop Bits: 1
- Flow Control: None

**Serial to Network Settings:**

- Server/Client mode: Enable
- Operation Mode: Socket
- Connection Type: UDP
- Server Listening Port: 5000 (Note: Please enter an integer between 10-65535.)
- Client Destination Host Name/IP: 192.168.0.4 (Note: Please enter host name or IP address(e.g. google.com or 10.4.1.100).)
- Client Destination Port: 5000 (Note: Please enter an integer between 1024-65535.)

Buttons: Save, Apply

## 5. 3<sup>rd</sup> Party Virtual COM port driver:

### 5.1 Eterlogic VIRTUAL SERIAL PORTS EMULATOR:

<http://www.eterlogic.com/Products.VSPE.html>

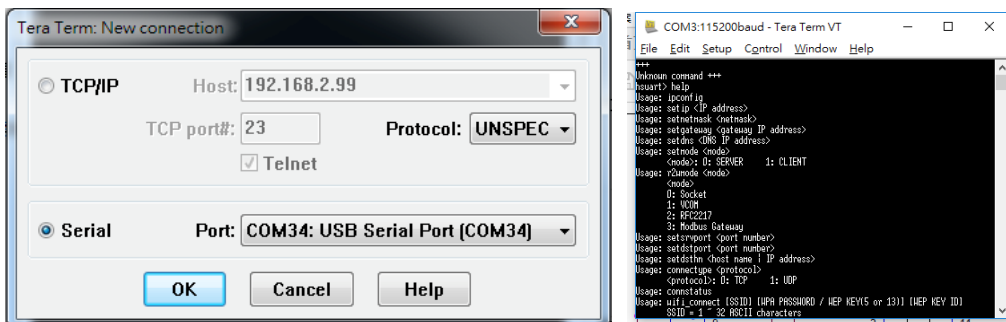
### 5.2 Eltima Virtual COM Port Driver:

<https://www.virtual-serial-port.org/>

## 6. Test

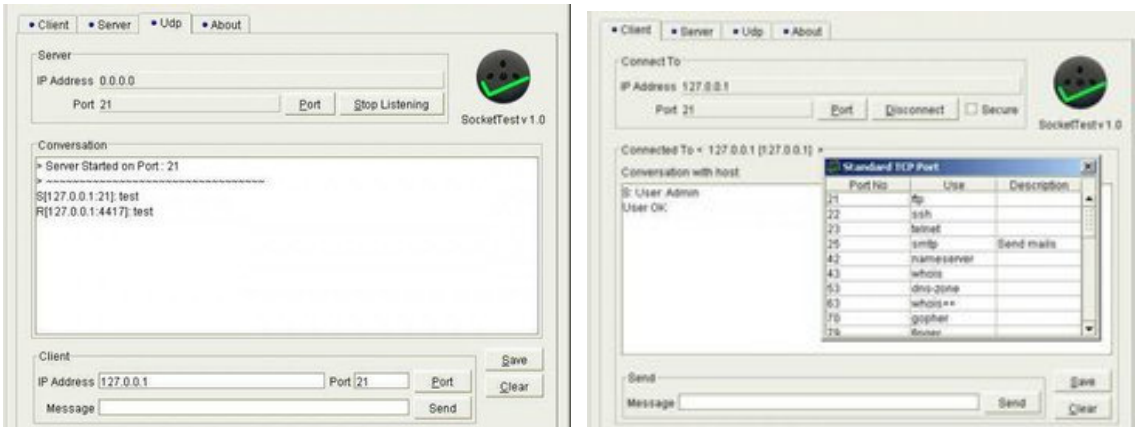
### 6.1 Teraterm: for COM port or TCP server

The user will test the TCP or COM port. The COM port will be used before VCOM executed.



Download: <https://osdn.net/projects/ttssh2/releases/>

### 6.2 SocketTest: TCP server or Client testing



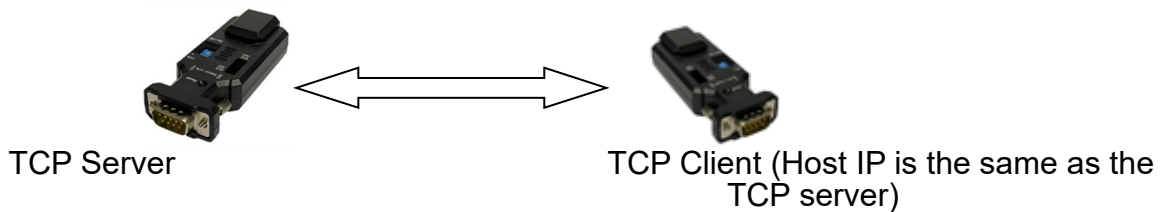
Download: <https://sourceforge.net/projects/sockettest/>

**7. Reset button:**

Press the “Reset” button over 5 seconds, the Ethernet adapter will reset to default value. The LEDs will be off for some time and then reboot to the default value. The function is the same as the software reset.

**8. One to one connection:**

The two Ethernet adapters will be connected directly without access point.



**9. Test APP Download:**

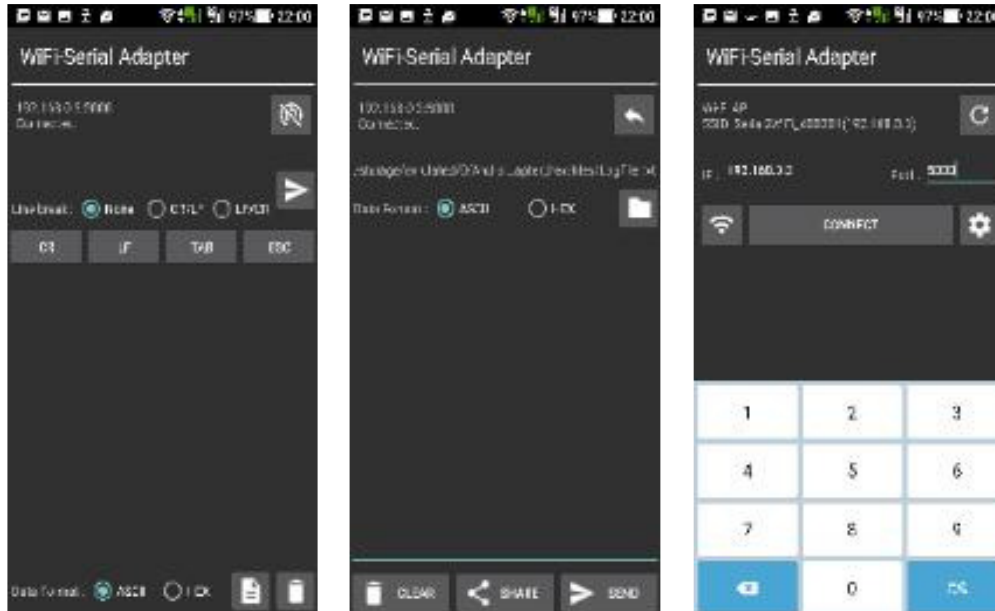
If you need the sample code, please contact the supplier.

iOS:

Android:



Screenshot of the test APP:



## 10. Customized design service:

### 10.1 Cloud integration

### 10.2 APP

### 10.3 Hardware

### 10.4 Firmware

11. The sample code of iOS or Android will be offered w/o charge for customer's integration. The version is not the same as the APP on store, it include the communication protocol w/o user interface. The designer will develop the UI and application based on the sample code. Please contact the supplier for the sample code.